

## **Historic, Archive Document**

Do not assume content reflects current scientific knowledge, policies, or practices.



6231

IF UNDELIVERED RETURN TO

**LOUISVILLE SEED CO.**

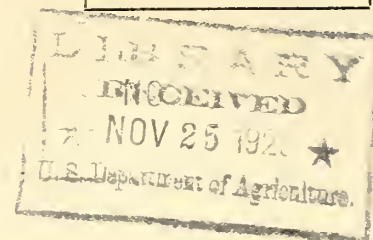
INCORPORATED

*Exclusively Wholesale*

226 N. 15th Street - LOUISVILLE, KY.

RETURN POSTAGE GUARANTEED

Sec. 435 P. L. &amp; R.

**1½c PAID**Permit No. 60  
LOUISVILLE, KY.D. N. Shoemaker,  
U. S. Dept. Agriculture,  
Washington, D. C.**PRICE LIST****Today's Most Important Mail**

**VIGORO**  
*Specially prepared plant food*

**PRICES**

100 Lb. Sax . . . . . \$3.50 Each  
50 " " . . . . . 2.00 Each  
25 " " . . . . . 1.15 Each  
Case—16—5 Lb. Cartons . . . . . 5.30 Case

**NONE BETTER**

**MEMBERS**  
FARM SEED ASSOCIATION  
NORTH AMERICA



**CALL BY PHONE**  
Our  
Long Distance Numbers

City } 6727  
      } 6728



**NITRAGIN** the original  
**Soil Inoculator**

Alfalfa, Sweet Clover, Soys, Clovers, Peas,  
Beans, Vetch, Cowpeas—all legumes.  
The 1 bu. size will inoculate one bu. or sixty  
pounds of any legume seed. Other sizes in pro-  
portion.

Wholesale Retail		Prices reduced on Soys and Cow Peas	
		Wholesale Retail	
½ bu. size.	\$.30 \$ .40	½ bu. size.	\$.30 \$ .40
¼ bu. " "	.45 .60	1 bu. " "	.50 .70
1 bu. " "	.70 1.00	5 bu. " "	1.75 2.50
5 bu. " "	3.35 4.75	Always state kind of seed-legumes only	





Subject to immediate acceptance and market changes we quote fob Louisville

SEPTEMBER 10, 1929

**NEW CROP RYE**

Rosen . . . . .	\$1.40 per bu.
Northern White . . . . .	1.35 per bu.

10 Sax Lots or More, 5c Bushel Less

**RED CLOVER**

	Cwt.
Gold Medal Domestic . . . . .	\$24.00
Choice Domestic . . . . .	22.00
Royal Domestic . . . . .	20.00
Special Small Grain . . . . .	17.50
Best French . . . . .	20.00
Choice French . . . . .	17.50

**Mammoth or Saplin Clover**

Gold Medal . . . . .	\$25.00
Choice . . . . .	23.00
Royal . . . . .	22.00

**ALSIKE**

Gold Medal . . . . .	\$22.50
Choice . . . . .	21.00
Special, contains White Clover . . . . .	20.00
Special, contains Red Clover . . . . .	15.00

**ALFALFA**

Gold Medal . . . . .	\$23.00
Choice . . . . .	21.00

**GRIMMS ALFALFA**

Utah Grown . . . . .	\$37.50
Sealed, verified and packed in 30 and 60 lb. bags.	

**SWEET CLOVER**

Gold Medal, W. B. Biennial . . . . .	\$8.00
Choice, " " . . . . .	7.50
Gold Medal, Yellow Biennial . . . . .	8.50
Choice " " . . . . .	7.50

**CRIMSON CLOVER**

Domestic Grown . . . . .	\$15.00
--------------------------	---------

**JAPAN CLOVER**

Choice (Recleaned) . . . . .	\$18.00
------------------------------	---------

**WHITE CLOVER**

	Cwt.
Gold Medal . . . . .	\$30.00
Choice . . . . .	20.00
Special . . . . .	17.50

**TIMOTHY**

Gold Medal . . . . .	\$6.50
Abe (99% Pure) . . . . .	6.25
Choice . . . . .	5.75
Royal . . . . .	5.00

**ALSIKE and TIMOTHY**

Choice Quality . . . . .	\$7.50
--------------------------	--------

**PASTURE MIXTURE**

Contains Timothy, Alfalfa, Alsike, Redtop, etc. . . . .		\$5.00
With Orchard Grass . . . . .		6.50

**RED TOP**

Gold Medal . . . . .	\$16.50
Abe (90% Pure) . . . . .	16.00
Choice . . . . .	15.50
Royal . . . . .	14.00
Unhulled . . . . .	8.50

**ORCHARD GRASS**

Gold Medal . . . . .	\$16.00
Choice . . . . .	15.50
Royal . . . . .	14.50

**KY. BLUE GRASS**

Gold Medal . . . . .	\$21.00
Choice . . . . .	20.00
Light Weight . . . . .	12.50

**RYE GRASS**

Domestic Recleaned . . . . .	\$8.00
------------------------------	--------

**WINTER BARLEY**

	Bu.
Bearded . . . . .	\$ 1.40

**SEED WHEAT**

Blue Stem . . . . .	\$2.00
Mediterranean . . . . .	\$2.00

**LAWN GRASS**

Gold Medal . . . . .	\$28.00
Cherokee . . . . .	25.00
Shady Place . . . . .	33.00

Put up in muslin bags printed in two colors, 1 lb., 3 lb., 5 lb. net. Above grades in bulk \$3.00 per cwt. less. Also in 1 lb. cartons; same price as 1 lb. bags.

**MISCELLANEOUS**

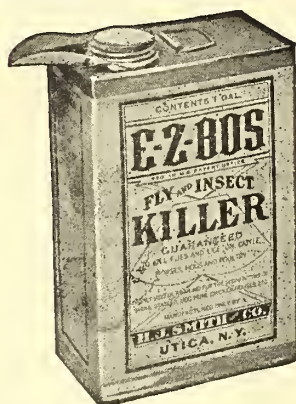
	Cwt.
Sudan Grass . . . . .	\$5.00
Buckwheat . . . . .	4.00
Winter or Hairy Vetch . . . . .	9.50
Dwarf Essex Rape . . . . .	7.50
Tall Meadow Oat Grass . . . . .	17.00

**SEED GRAIN**

	Bu.
Winter Turf Oats . . . . .	\$ 1.25
Burt Oats . . . . .	.85
Feed Oats . . . . .	.65

**SEED SOWERS**

Cyclone each . . . . .	\$1.75	Doz. \$18.00
Horn " . . . . .	.75	Doz. 7.50



**E-Z-BOS Fly and Insect Killer**

*Sells the Entire Year*  
**KILLS ALL INSECTS, INCLUDING**  
 Lice, Mites, Horse Flies, etc.  
*Well Known Easy Seller*  
 Profitable Side Line for any Business  
 Gallon Cans, per doz. \$12.00  
 Retail \$1.50 each  
 Half gallon cans, per doz. 7.20  
 Retail \$1.00 each  
 Quart Cans, per doz. 4.80  
 Retail 65c each

*W. D. Lewis Inoculator*

**NEW REDUCED PRICES**  
 For CLOVERS or ALFALFA

	Price	Per case	Per can
	(Small Seeds)	case lots	case lots
1/2 Bu. or \$0.50 size (48 in case) . . . . .	\$14.40	\$0.30	
1 Bu. or 1.00 size (24 in case) . . . . .	12.00	0.50	
2 1/2 Bu. or 1.75 size (12 in case) . . . . .	13.80	1.15	

For Soy Beans, Vetch, Peas, Beans, Cow Peas  
 (All Large Seeds)

1 Bu. or \$0.50 size (48 in case) . . . . .	\$14.40	\$0.30
2 Bu. or 1.00 size (24 in case) . . . . .	12.00	0.50
5 Bu. or 1.75 size (12 in case) . . . . .	13.80	1.15

Less than case lots, add ten cents per can.  
 Cases May be Assorted. State Seed to be Treated.

**CROW-TOX**

Protects Seed Corn and All Seed  
 Grains Usually Molested by  
 Crows, Moles, Squirrels,  
 etc.



*Aids and hastens germination*  
 Large Size (treats 2 bu.), per doz. . . . \$12.00  
 Retail \$1.50 each  
 Small Size (treats 1 bu.), per doz. . . . 8.00  
 Retail \$1.00 each

ORDERS FOR LESS THAN BAG LOTS WILL BE CHARGED FOR AT 50c PER 100 Lbs. HIGHER THAN LIST PRICES.

DISCLAIMER—The Louisville Seed Company gives no warranty express or implied, as to description, quality or any other matter of any seeds it sells and will not be responsible for the crop.

**Louisville Seed Company**  
 INCORPORATED  
*Exclusively Wholesale* . . . . . LOUISVILLE, KENTUCKY

TACK UP FOR FUTURE REFERENCE

**GOLD MEDAL FIELD SEEDS**



***"He Reaps Most Who Sows Best"***

LEGAL WEIGHTS OF SEED AND GRAIN ALSO QUANTITY PER ACRE

Lbs. Per Bu.		Lbs. Per Acre
47	Barley	75—100
60	Beans, Soy, drills	30—40
60	Beans, Soy, broadcast	60—80
14	Bluegrass, Kentucky	21—28
48	Buckwheat	50—75
50	Cane, Drill	10—15
50	Cane, broadcast	50—75
60	Clover, Alfalfa, drills	15—20
60	Clover, Alfalfa, broadcast	18—22
60	Clover, Alsike (alone for forage)	8—15
60	Clover, Alsike (on wheat or rye in spring)	4—6
60	Clover, Crimson	12—15
25	Clover, Japan (Lespedeza)	15—25
60	Clover, Sapling (Mammoth)	10—15
60	Clover, Red (alone for forage)	10—15
60	Clover, Red (on small grain in spring)	7—12
60	Clover, Sweet (hulled)	10—15
33	Clover, Sweet (unhulled)	20—30
60	Clover, White	10—20
56	Corn	6—12
56	Corn (for Silage)	40—56
50	Millet, All Varieties (for seed)	25—40
50	Millet, All Varieties (for hay)	40—50
32	Oats	50—65
14	Orchard Grass	20—30
60	Peas, Cowpeas (drills)	45—60
60	Peas, Cowpeas (broadcast)	75—90
50	Rape (drill)	4—8
50	Rape (broadcast)	8—10
14	Red Top Fancy	7—12
14	Red Top (unhulled)	10—15
56	Rye	56—112
25	Sudan Grass	15—25
24	Sunflower	8—10
45	Timothy	10—15
45	Timothy and Alsike	8—10
60	Vetch, Hairy (drills)	35—50
60	Vetch, Hairy (broadcast)	50—75
60	Wheat	90—120

**Louisville Seed Company**

INCORPORATED

226 N. Fifteenth St.

**LOUISVILLE, KENTUCKY**